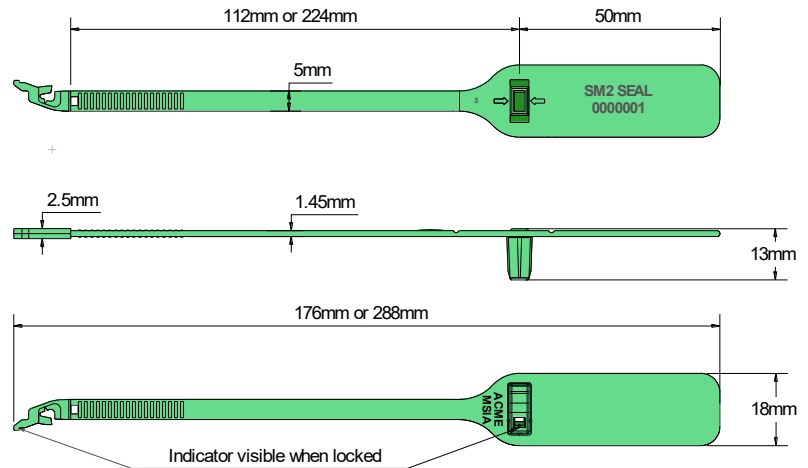




SM2 SEAL Data Sheet

Acme Reg No: 2907015



The Acme **SM2 Seal** is a fixed length seal manufactured from Polypropylene material. Similar to our established Smart Lock Seal, it features a strong single point locking mechanism and an indicator which protrudes through a hole in the underside of the locking head signifying it has been correctly locked. This seal benefits by having a stronger breaking strength, a very narrow strip width and a bigger tag marking area, it is moulded in mats of 10 joined at the tag, so there are no connectors joining the seals together, hence easier handling. The seal also features a break off point for easy removal making this seal suitable for most applications.

Technical Data

Recommended Applications

Airlines, Cargo, Trailers, Containers, Rail freight, Refineries, Vehicles, Fire doors, Lockers.

Material

Polypropylene with Biodegradable additives

Available Operating Lengths

(L1) 11cm (overall 17.6cm)

(L2) 22cm (overall 28.8cm)

Tag Marking Dimensions

18mm x 41mm

Average Application Breaking Strength

13kg

Marking

Laser or Foil marking

Consecutively numbered as standard

Optional Customer name/logo

Optional Laser Barcoding

Colours

Foil marked: red, blue, green, yellow, orange, black, white.

Laser or Foil marked: pastel shades of pink, blue, green, yellow, peach, also black and white.

Other colours may be available on request.

Packaging

Standard Packaging : 10 per mat and 1,000 seals/carton

Carton Dimensions : (L1) - 31cm x 25.7cm x 24.5cm

: (L2) - 32cm x 20cm x 28cm

Carton weight : (L1) - 2.60kg/carton

: (L2) - 3.32kg/carton

