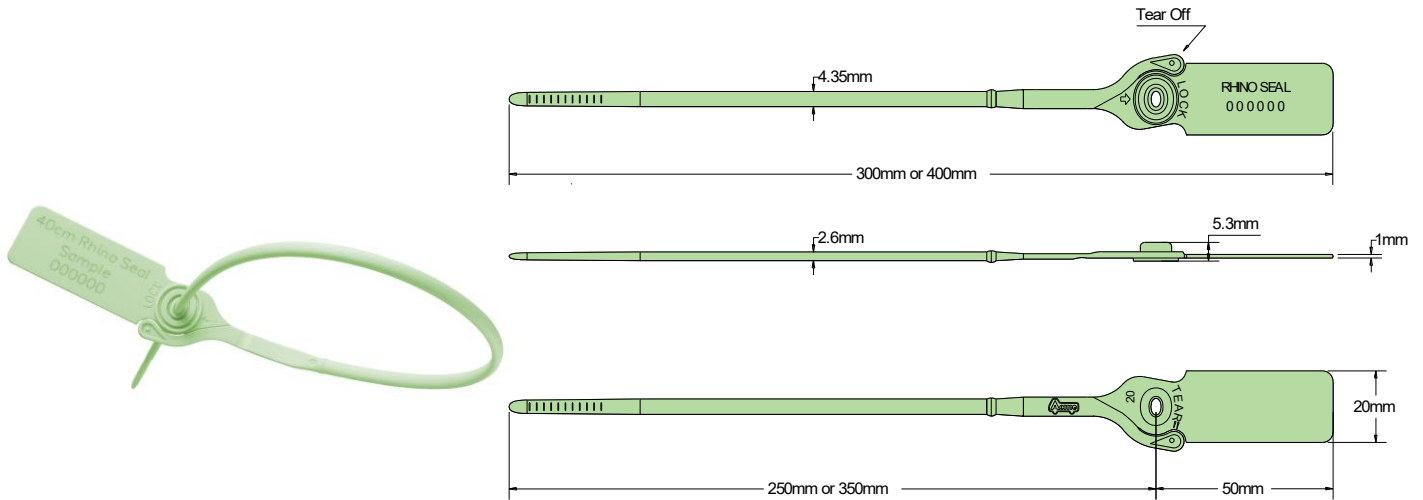




## RHINO1 SEAL Data Sheet

Acme Reg No: 0909025



The Acme **RHINO1 Seal** is a smooth ribbon, pull-tight seal manufactured from Polypropylene material. The design profile is unique and features rolled heat staking technology to secure the metal spring insert to the body, thus providing clear evidence of tampering if forced open or cut. The seal is manufactured with tear off tag. The excellent breaking strength, combined with a ribbon width of less than 5mm, makes this seal the ideal choice for many applications.

### Technical Data

#### Recommended Applications

Airlines, Cargo, Trailers, Tankers, Rail & Sea Freight, Containers, Refineries, Warehouses, Cash bags, Postbags, Valves, Hatches, Lockers.

#### Material

Body - Polypropylene with Biodegradable additives  
Insert - Spring Stainless Steel

#### Available Operating Lengths

(L1) 25cm (overall 30cm)  
(L2) 35cm (overall 40cm)

#### Strap Width

4.3mm

#### Tag Marking Dimensions

20mm x 35mm

#### Average Application Breaking Strength

25kg

#### Marking

Laser or Foil marking  
Consecutively numbered as standard  
Optional Customer name/logo  
Optional Laser Barcoding

#### Colours

Foil marked: red, blue, green, yellow, orange, black, white.  
Laser or Foil marked: pastel shades of pink, blue, green, yellow, peach, also black and white.  
Other colours may be available on request.

#### Packaging

Standard Packaging : 10 per mat and 1,000 seals/carton  
Carton Dimensions : (L1) - 33.5cm x 21.5cm x 22.5cm  
: (L2) - 43.5cm x 22cm x 23cm  
Carton weight : (L1) - 3.6kg/carton  
: (L2) - 4.6kg/carton

