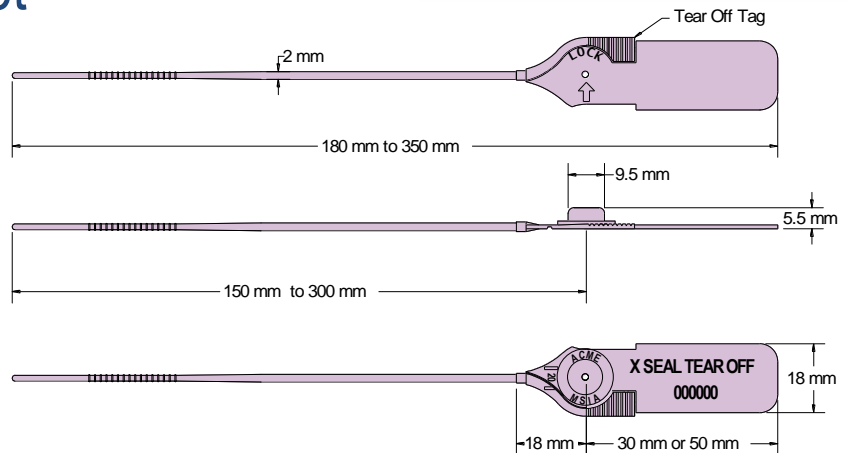




X1 SEAL Data Sheet

Acme Reg No: 0703008a



The Acme **X1 Seal** is a versatile smooth ribbon pull-tight seal manufactured from Polypropylene material. The design features rolled heat staking technology to secure the metal spring insert to the body, which provides clear evidence of tampering if forced open or cut. The seal is manufactured with a **Long Tag (LT)** in three different lengths, all with a featured Tear Off Tag and with only a 2mm diameter ribbon this seal is ideal for many applications particularly where there are small sealing apertures.

Technical Data

Recommended Applications

Airline in-flight duty free or Catering Trolleys, Baggage, Refineries, Fuel and Oil Tankers, Chemical Drums, ATM Dispensers, Coin Boxes, Cash Bags, Gaming Machines, Postbags, Fire doors, Lockers

Material

Body - Polypropylene with Biodegradable additives
Insert - Spring Stainless Steel

Available Operating Lengths

(ST) Short Tag (30mm)

- (L1) 15cm (overall 18cm)
- (L2) 20cm (overall 23cm)
- (L3) 30cm (overall 33cm)

(LT) Long Tag (50mm)

- (L1) 15cm (overall 20cm)
- (L2) 20cm (overall 25cm)
- (L3) 30cm (overall 35cm)

Tag Marking Dimensions

Short Tag - 18mm x 20mm
Long Tag - 18mm x 40mm

Ribbon Diameter

2mm

Average Application Breaking Strength

12kg

Marking

Laser or Foil marking
Consecutively numbered as standard
Optional Customer name/logo
Optional Laser Barcoding

Colours

Foil marked: red, blue, green, yellow, orange, black, white.
Laser or Foil marked: pastel shades of pink, blue, green, yellow, peach, also black and white.
Other colours may be available on request.

Packaging

Standard Packaging : 10 per mat and 1,000 seals/carton

Carton Dimensions **ST & LT** : (L1) - 23cm x 20cm x 22cm
: (L2) - 29cm x 20cm x 22cm
: (L3) - 37cm x 20cm x 22cm

Carton weight **(ST)** : (L1) - 1.45kg/carton
: (L2) - 1.65kg/carton
: (L3) - 1.95kg/carton

Carton weight **(LT)** : (L1) - 1.8kg/carton
: (L2) - 2.0kg/carton
: (L3) - 2.3kg/carton

