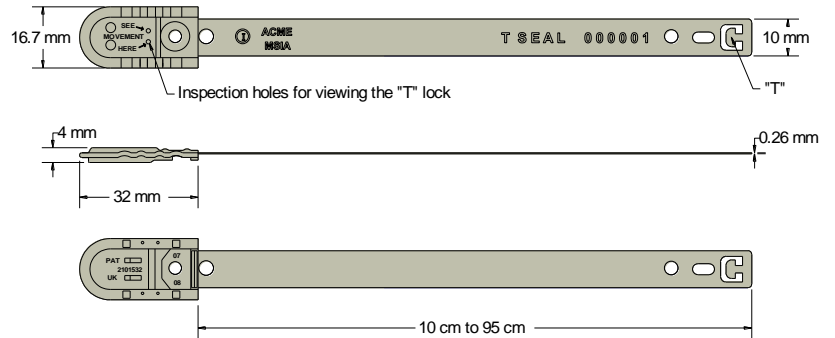




T SEAL Data Sheet

Acme Reg No: 1004075



The Acme **T Seal** is a fixed length metal seal manufactured in Tin plated steel. The design features a unique double locking action and inspection holes in the lock box which enable the user and security personnel to view the tips of the "T" mechanism within the lock box ensuring the seal has been correctly locked and has not been pre-tampered. This seal cannot be disengaged by intrusion or manipulation, nor can it be dismantled or cut without leaving obvious traces. It can be manufactured in operating lengths of between 10cm to 95cm and is suitable for use in temperatures of -60°C to 320°C (-76°F to 608°F).

Technical Data

Recommended Applications

Trailers, Tankers, Containers, Rail freight, Refineries, Cash bags, Postbags, Lockers.

Material

Matt Tinplated Steel

Available Operating Lengths

10cm - 95cm (18cm is the standard length)

Strip Width

10mm

Marking Dimensions

10mm x 85mm

Average Breaking Strength

70kg

Acceptance

HM Revenue & Customs Sub-Group 3
EU Regulation 2454/93, Article 386, Annex 46A
US in-Bond Security

Acceptance

HM Revenue & Customs Sub-Group 3
EU Regulation 2454/93, Article 386, Annex 46A
US in-Bond Security

Marking

Embossed 7 digit consecutive numbers as standard
Embossed traceability prefix as standard
Optional embossed customer prefix/logo

Colours

Matt tinplated as standard but the T seal can be colour coded using the encapsulated T seal cover.

Packaging (18cm standard length seal)

Standard Packaging : 25 seals per pack and 1,000 seals/carton
Carton Dimensions : 33cm x 25.4cm x 12cm
Carton weight : 6.5kg/carton
Packaging details for other lengths are available on request.