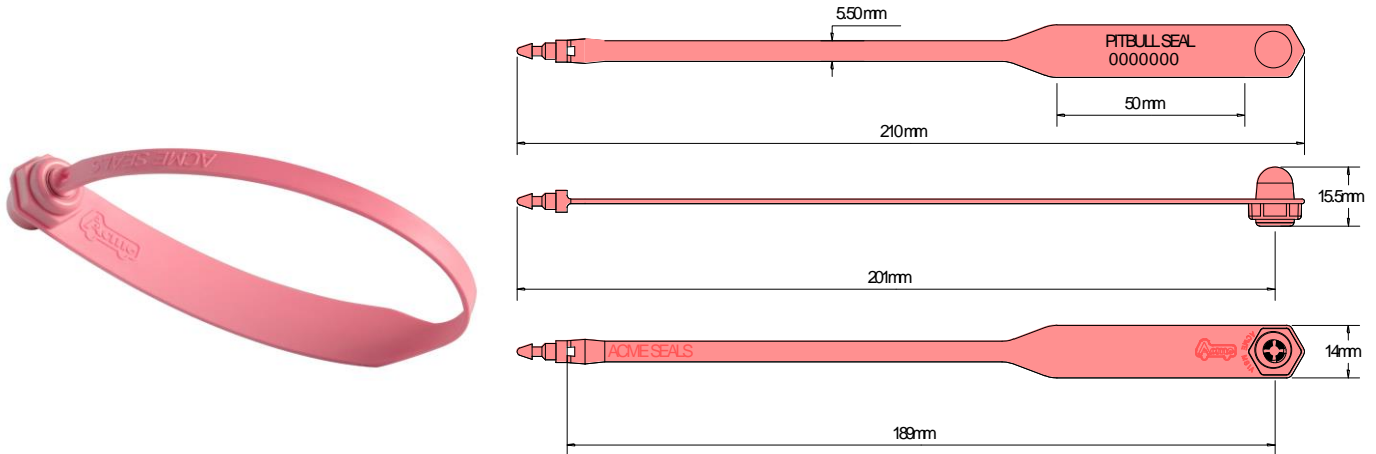




## PITBULL SEAL Data Sheet

Acme Reg No 2010017



The Acme **Pitbull Seal** is a fixed length seal manufactured from two dissimilar materials. The locking mechanism is the same as the tried and tested Bulldog seal with an Acetyl insert to withstand freezing and boiling conditions and a polypropylene body for flexibility. The design includes rolled heat staking technology to secure the insert to the body, which provides clear evidence of tampering if forced open or cut. The seal has a large marking area within the loop of the seal unlike many large tag seals where the tag is on the outside which can be a problem in some applications. Manufactured with or without and easy breakoff point for easy removal this seal is ideal for securing vehicle doors, fire doors and restrictive work areas.

### Technical Data

#### Recommended Applications

Airline Cargo, Trailers, Containers, Rail freight, Plantations, Refineries, Vehicles, Fire doors, Lockers.

#### Material

Body - Polypropylene with Biodegradable additives  
Insert – Acetyl with Biodegradable additives

#### Available Operating Lengths

19cm (overall 21cm)

#### Strap Width

5.5mm

#### Marking Tag

50mm x 14mm

#### Average Application Breaking Strength

20kg

#### Marking

Laser or Foil marking  
Consecutively numbered as standard  
Optional Customer name/logo

#### Colours

Foil marked: red, blue, green, yellow, orange, black, white  
Laser or foil marked: pastel shades of pink, blue, green, yellow, peach, also black and white.  
Other colours may be available on request.

#### Packaging

Standard Packaging : 10 per mat and 1,000 seals/carton  
Carton Dimensions : 31cm x 25.7cm x 24.5cm  
Carton weight : 3.7kg/carton

