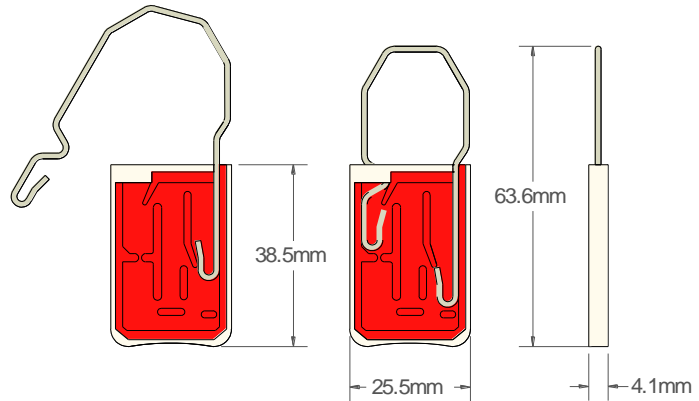




PL2 PADLOCK SEAL Data Sheet

Acme Reg No: 1403016



The Acme **PL2** is a Padlock seal manufactured from two materials, Styrene Acrylonitrile for the body and Stainless Steel for hook hasp. The cover is transparent so the user can see the seal is correctly locked and if any attempt is made to compromise the seal the cover will crack showing clear evidence of attempted tampering.

Technical Data

Recommended Applications

Airlines
Cargo
Lockers
Banking
CIT

Material

Body - Styrene Acrylonitrile
Hasp - Stainless Steel

Packaging

Standard Packaging : 1,000 seals/carton
Carton Dimensions : 45.2cm x 24cm x 18.3cm
Carton weight : 6.8kg/carton

Marking

Laser
Consecutively numbered as standard
Optional Customer name/logo
Optional Laser Bar-coding

Colours

Transparent red or green cover with white body.
Other colours may be available on request.