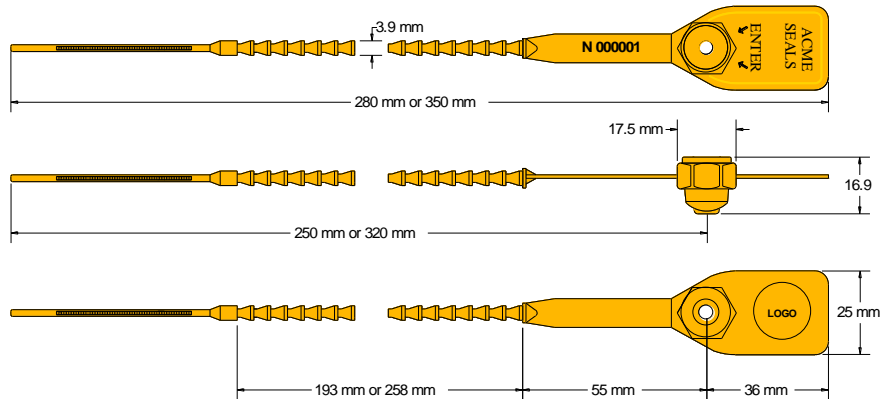




GRIPTIGHT SEAL Data Sheet

Acme Reg No: 2003098



The Acme **Griptight Seal** is a heavy duty pull-tight seal manufactured from two dissimilar materials. The acetyl insert is durable and will withstand freezing and boiling conditions, whilst the nylon body is flexible for easy use. The design features rolled heat staking technology to secure the insert to the body, which provides clear evidence of tampering if forced open or cut. This seal is suitable for most applications where strength is a requirement.

Technical Data

Recommended Applications

Airlines, Cargo, Trailers, Tankers, Rail freight, Refineries, Containers, Postbags, Lockers, Banks, Cash in Transit.

Material

Body - Nylon 66
Insert - Acetyl

Available Operating Lengths

(L1) 25cm (overall 28cm)
(L2) 32cm (overall 35cm)

Ribbon Diameter

3.9mm

Tag Marking Dimensions

36mm x 25mm

Average Breaking Strength

39kg

Marking

Laser or Foil marking
Consecutively numbered as standard
Optional Customer name/logo
Optional Laser Barcoding on white foil patch

Colours

Foiled marked: Red, Blue, Green Yellow, Black, White
Laser marked: Yellow & White
Other colours may be available on request

Packaging

Standard Packaging : 5 per mat and 1,000 seals/carton
Carton Dimensions : (L1) - 44.5cm x 44.5cm x 25cm
 : (L2) - 44.5cm x 44.5cm x 25cm
Carton weight : (L1) - 6.71kg/carton
 : (L2) - 7.35kg/carton