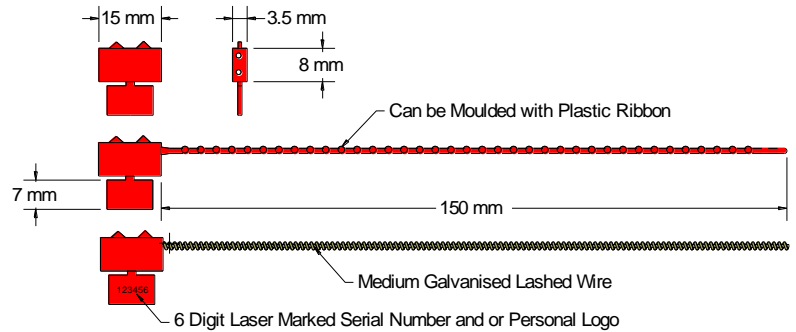




## CRIMP SEAL Data Sheet

Acme Reg No: 0302002



The Acme **Crimp Seal** is manufactured in high grade polypropylene material and is suitable for applications where the traditional lead seals cannot be used. Usually supplied as a separate part ready for use with lashed sealing wire it is also manufactured with a 15cm ribbon if strength is not the main priority. Both versions may be supplied with laser marked consecutive numbering or plain if preferred. Effective closure is achieved with the Acme sealing tool **YPL 9062** fitted with corrugated dies.

### Technical Data

#### Recommended Applications

Gas, Water & Electric meters, Taxi meters, Drums, Trailers, Cages.

#### Material

Polypropylene

#### Available Operating Lengths

PCS1 - without string for use with lashed wire (any length)  
PCS2 - with 15cm plastic ribbon

#### Tag Marking Dimensions

10mm x 7mm

#### Marking

Laser marking  
Optional consecutively numbering  
Optional Customer name/logo

#### Colours

Plain seals: red, blue, green, yellow, orange, black, white.  
Laser marked: pastel shades of pink, blue, green, yellow, peach, also black and white.  
Other colours may be available on request.

#### Packaging

Standard Packaging : PCS1 - 25,000 seals/carton  
: PCS2 - 20,000 seals/carton  
Carton Dimensions : 79cm x 27cm x 34.8cm  
Carton weight : PCS1 - 15.0kg/carton  
: PCS2 - 12.5kg/carton