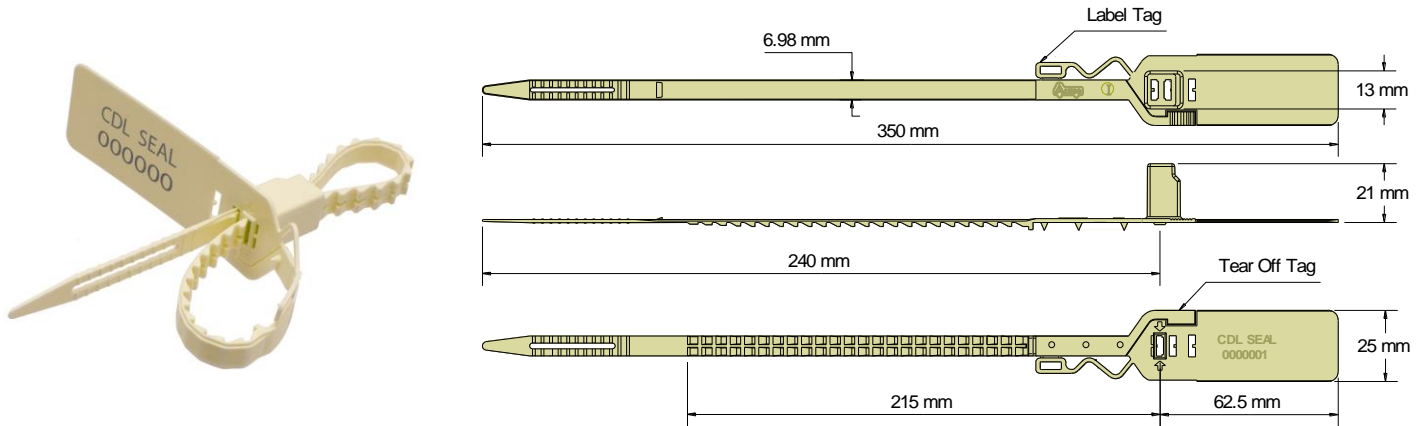




## CDL SEAL Data Sheet

Acme Req No: 0201012



The Acme **CDL Seal** is a versatile pull-tight seal manufactured from Polypropylene material. The design features two separate locking mechanisms within the locking housing, which allows the user to double lock the seal by inserting the strap into the hole with the embossed arrows and after pulling the strap tight the user can then re-insert the strap into the hole next to the exit hole of the initial locked strap and by pulling the strap tight it is double locked within the locking housing. This seal also features a label tag and a tear off tag making this a very versatile seal that can be used for most applications.

### Technical Data

#### Recommended Applications

Airlines, Cargo, Trailers, Containers, Rail freight, Refineries, Warehouses, Cash bags, Postbags, Lockers.

#### Material

Polypropylene

#### Available Operating Lengths

29cm (overall 35cm)

#### Strap Width

7mm

#### Tag Marking Dimensions

25mm x 48mm

#### Average Breaking Strength

23kg

#### Marking

Laser or Foil marking  
Consecutively numbered as standard  
Optional Customer name/logo  
Optional Laser Barcoding

#### Colours

Foil marked: red, blue, green, yellow, orange, black, white.  
Laser or Foil marked: pastel shades of pink, blue, green, yellow, peach, also black and white.  
Other colours may be available on request.

#### Packaging

Standard Packaging : 10 per mat and 1,000 seals/carton  
Carton Dimensions : 55cm x 41cm x 24cm

Carton weight (gross) : 6.5kg/carton