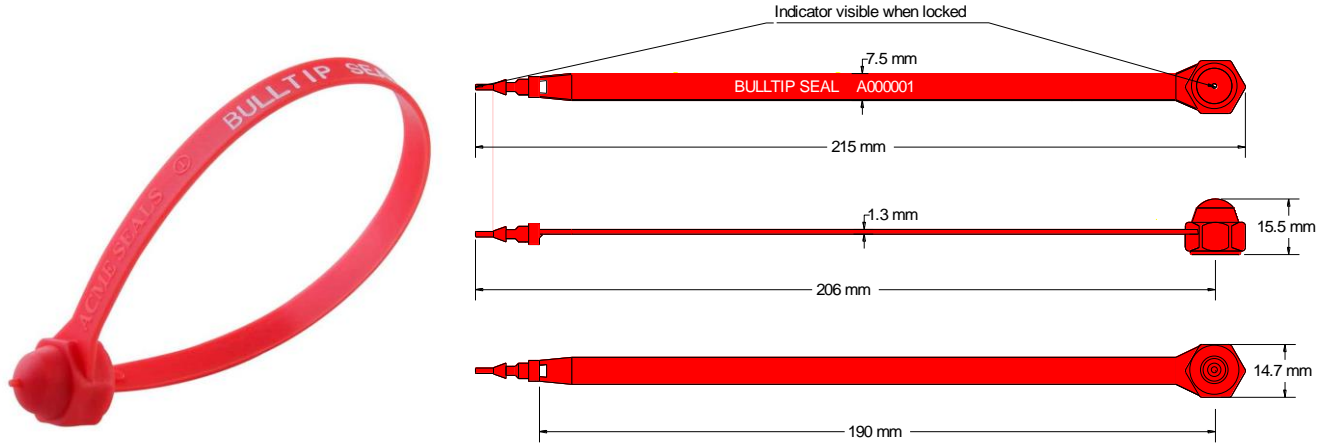




BULLTIP SEAL Data Sheet

Acme Req No: 0707007



The Acme **Bulltip Seal** is a fixed length seal manufactured from two dissimilar materials. The acetyl insert is durable and will withstand freezing and boiling conditions, whilst the polypropylene body is flexible for easy use. The design includes rolled heat staking technology to secure the insert to the body, which provides clear evidence of tampering if forced open or cut and a break off point for easy removal. Whilst having the same technical characteristics as the Bulldog seal, this seal has an indicator at the locking end which protrudes through a hole in the underside of the locking head signifying it has been correctly locked.

Technical Data

Recommended Applications

Airlines, Cargo, Trailers, Containers, Rail freight, Refineries, Warehouses, Cash bags, Postbags, Lockers.

Material

Body - Polypropylene
Insert - Acetyl

Available Operating Length

19cm (overall 21cm)

Strap Width

7.5mm

Average Breaking Strength

20kg

Recommended Applications

Airlines, Cargo, Trailers, Containers, Rail freight, Refineries, Warehouses, Cash bags, Postbags, Lockers.

Material

Body - Polypropylene
Insert - Acetyl

Available Operating Length

19cm (overall 21cm)

Strap Width

7.5mm

Average Breaking Strength

20kg