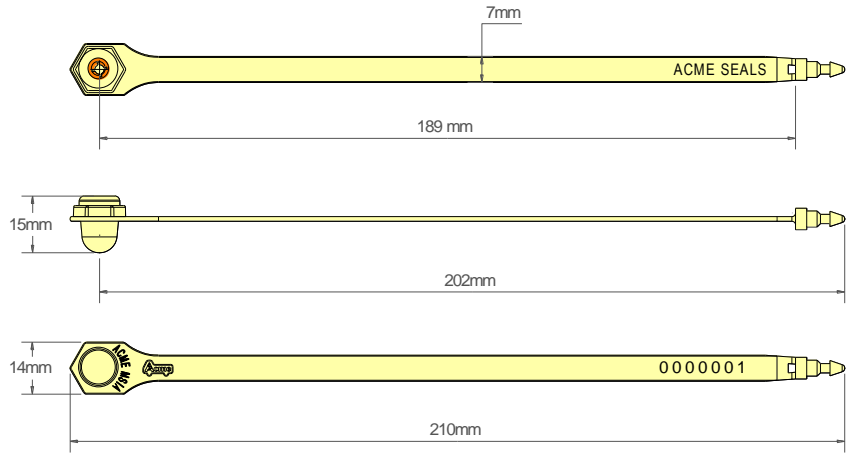




BULLDOG GEN2 SEAL Data Sheet

Acme Reg No: 0606020



The Acme **Bulldog Gen2 Seal** has all the same features as our original Bulldog Seal but unlike the original this product has an updated design with an easy tear off between each seal so there are no scrap pieces of plastic that can be a hazard if left on the floor. The seal is fixed length and manufactured from two dissimilar materials, the Acetyl insert is durable and will withstand freezing and boiling conditions, whilst the polypropylene body is flexible for easy use. The design includes rolled heat staking technology to secure the insert to the body, which provides clear evidence of tampering if forced open or cut and a break off point for easy removal. This seal is ideal for securing vehicle doors and fire doors but is also suitable for other sealing requirements.

Technical Data

Recommended Applications

Airline Cargo, Trailers, Containers, Rail freight, Plantations, Refineries, Vehicles, Fire doors, Lockers.

Material

Body - Polypropylene with Biodegradable additives
 Insert - Acetyl with Biodegradable additives

Available Operating Lengths

19cm (overall 21cm)

Strap Width

7mm

Field Application - Average Breaking Strength

20kg

Apparatus - Average Direct Pull Breaking Strength

10kg

Marking

Laser or Foil marking
 Consecutively numbered as standard
 Optional Customer name/logo

Colours

Foil marked: red, blue, green, yellow, orange, black, white
 Laser or foil marked: pastel shades of pink, blue, green, yellow, peach, also black and white.
 Other colours may be available on request.

Packaging

Standard Packaging : 10 per mat and 1,000 seals/carton
 Carton Dimensions : 31cm x 25.7cm x 24.5cm
 Carton weight : 2.7kg/carton

