



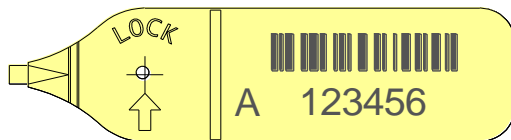
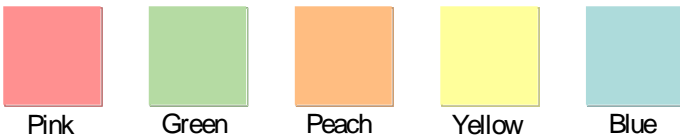
BAR-CODED SEAL Data Sheet

Laser or thermo-transfer barcoding is available on all Acme plastic security seals including the Encapsulated T Seal and Bolt Seals. Whether the barcode is marked directly onto the plastic or onto a white patch we can produce a barcode with human readable digits to suit most applications.

Technical Data

The Acme standard barcode is a 6 digit Interleaved 2 of 5 or Code 128 with an alpha character prefix in non-barcode format. If an alpha character is required within the barcode i.e., 6 or more numeric digits plus 1 alpha digit this will be a special Code 128 barcode product. Our barcodes can be laser or thermo-transfer marked onto pastel colours shown below, plus black and white. Other pastel colours may be available on request for quantities in excess of 100,000 seals.

Colours

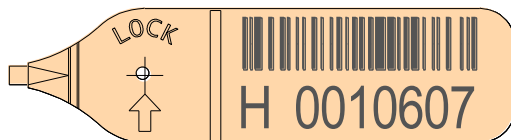


X Seal Long Tag in Yellow

Standard Code 128 - an alpha numeric barcode.

Acme standard version 6 numeric digits plus 1 alpha character in non-barcode format.

Barcode size 25mm x 5mm

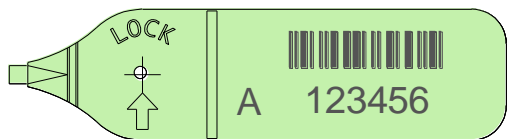


X Seal Long Tag in Peach

Special Code 128 - an alpha numeric barcode.

Acme standard version 7 numeric digits plus 1 alpha character in non-barcode format.

Barcode size 25mm x 5mm

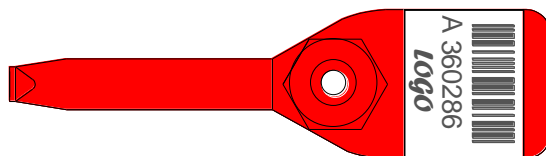


X Seal Long Tag in Pastel Green

Standard Interleaved 2 of 5 - a numeric barcode.

Acme standard version 6 numeric digits plus 1 alpha character in non-barcode format.

Barcode size 21mm x 5mm



Griptight Seal with Foil Patch in Red

Special Interleaved 2 of 5 - a numeric barcode.

Acme standard version 6 numeric digits plus 1 alpha character in non-barcode format laser marked onto a white foil patch for greater definition with space for a logo.

Patch size 25mm x 20mm

Recommended Applications

Cash bags, Tote boxes, Bar boxes, Banks, Warehousing, Refineries, Airlines, Mailrooms.

Special Bar-coding

Laser and thermo-transfer bar-coding is available in various configurations of up to 12 digits/characters and name/logo.