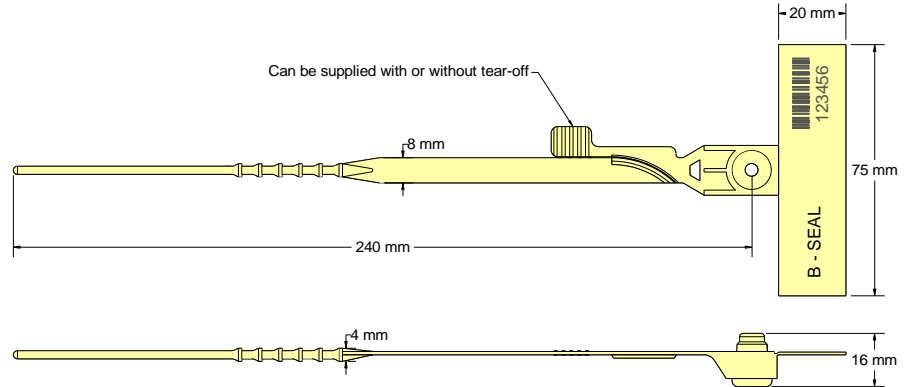




B SEAL Data Sheet

Acme Reg No: 0604010



The Acme **B Seal** is a special purpose pull-tight seal manufactured from two dissimilar materials. The Acetyl insert is durable and will withstand freezing and boiling conditions, whilst the polypropylene body is flexible for easy use. The design features rolled heat staking technology to secure the insert to the body, which provides clear evidence of tampering if forced open or cut. This seal is an ideal alternative to the conventional arrow type seals commonly used to secure ballot and tote boxes and has the advantage of a neatly designed hinged tag, which fits flush to the side of the box, allowing easy reading of a security number and/or barcode.

Technical Data

Recommended Applications

Airlines, Trailers, Containers, Cash, Boxes.

Material

Body - Polypropylene with Biodegradable additives
Insert – Acetyl with Biodegradable additives

Operating Length

24cm (overall 26.8cm)

Tag Marking Dimensions

20mm x 75mm

Ribbon Diameter

3.9mm

Average Application Breaking Strength

15kg

Marking

Laser

Consecutively numbered as standard

Optional Customer name/logo

Optional Laser Barcoding

Colours

Pastel shades of pink, blue, green, yellow, peach, also black and white.

Other colours may be available on request.

Packaging

Standard Packaging : 2 per mat and 1,000 seals/carton

Carton Dimensions : 47cm x 38.5cm x 19cm

Carton weight : 4.84kg/carton

