

Eden Research Laboratory

To: ACME Seals

Date: January 21, 2019

# Update

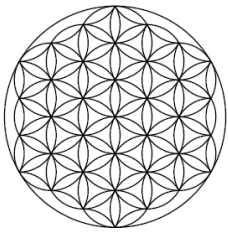
From: Thomas Poth

Number of pages including cover: 2

Regarding: ACME Seals Sample (76 days)

2412 Princeton NE, Suite E  
Albuquerque, NM 87107  
T 505.508.3994  
M 505.550.9316  
thomas.poth@edenresearchlab.  
com

|   | Inculum | Negative | Positive | P/Blue 1%<br>BIO |
|---|---------|----------|----------|------------------|
| Cumulative Gas<br>Volume (mL)               | 987.2   | 1081.2   | 8208.8   | 3630.9           |
| Percent CH <sub>4</sub> (%)                 | 37.1    | 36.1     | 37.1     | 35.9             |
| Volume CH <sub>4</sub><br>(mL)              | 366.2   | 390.6    | 3043.6   | 1302.7           |
| Mass CH <sub>4</sub> (g)                    | 0.26    | 0.28     | 2.17     | 0.93             |
| Percent CO <sub>2</sub> (%)                 | 42.7    | 41.0     | 43.3     | 41.9             |
| Volume CO <sub>2</sub><br>(mL)              | 421.6   | 443.2    | 3556.2   | 1520.9           |
| Mass CO <sub>2</sub> (g)                    | 0.83    | 0.87     | 6.99     | 2.99             |
| Sample Mass (g)                             | 10      | 10       | 10       | 20.0             |
| Theoretical<br>Sample Mass (g)              | 0.0     | 8.6      | 4.2      | 17.1             |
| Biodegraded<br>Mass (g)                     | 0.42    | 0.45     | 3.54     | 1.51             |
| Percent<br>Biodegraded<br>(%)               |         | 0.3      | 73.8     | 6.4              |
| * Adjusted<br>Percent<br>Biodegraded<br>(%) |         | 0.4      | 100.0    | 8.6              |

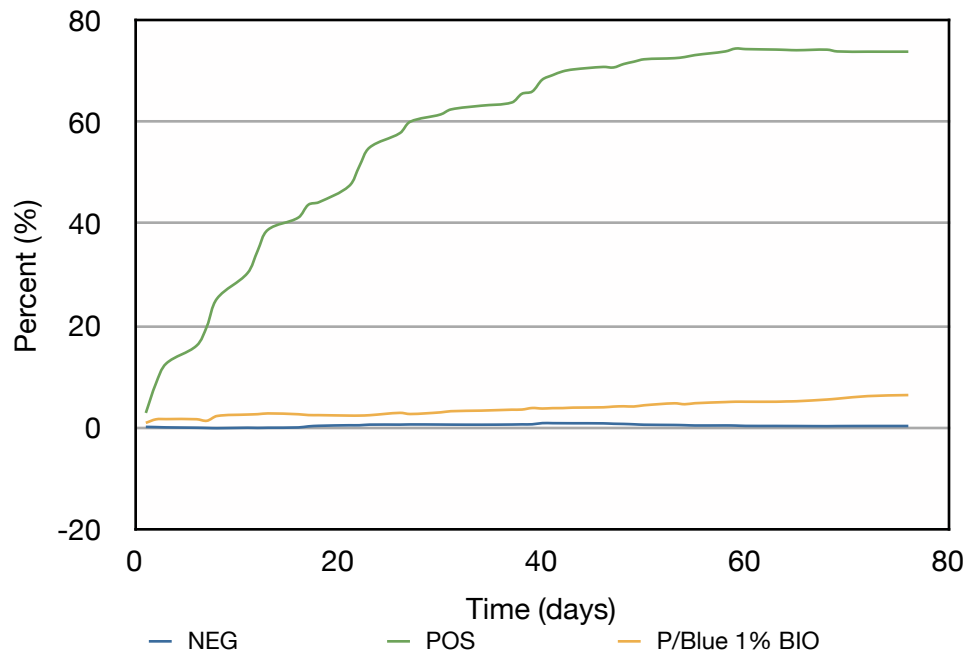


Eden Research Laboratory

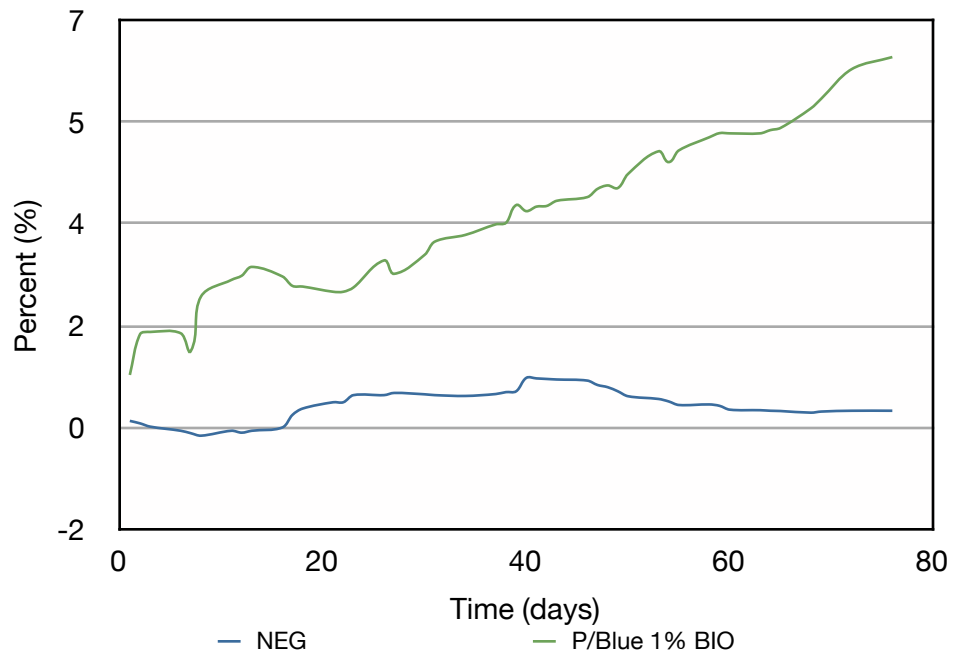
# Update

2412 Princeton NE, Suite E  
Albuquerque, NM 87107  
T 505.508.3994  
M 505.550.9316  
thomas.poth@edenresearchlab.  
com

## Biodegradation



## Biodegradation



\* Outside of the ASTM D5511 method and on the assumption that the positive control (Cellulose) will fully biodegrade, all value have been proportionally adjusted.