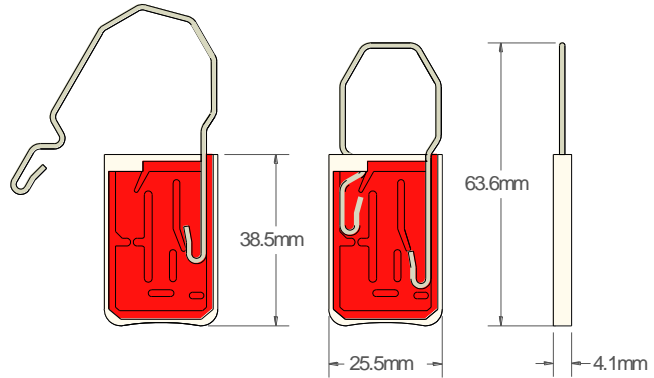




## PL2 PADLOCK SEAL Data Sheet



The Acme **PL2** is a Padlock seal manufactured from two materials, Styrene Acrylonitrile for the body and Stainless Steel for hook hasp. The cover is transparent so the user can see the seal is correctly locked and if any attempt is made to compromise the seal the cover will crack showing clear evidence of attempted tampering.

### Technical Data

#### Recommended Applications

Airlines  
Cargo  
Lockers  
Banking  
CIT

#### Material

Body - Styrene Acrylonitrile  
Hasp - Stainless Steel

#### Packaging

Standard Packaging : 1,000 seals/carton  
Carton Dimensions : 45.2cm x 24cm x 18.3cm  
Carton weight : 6.8kg/carton

#### Marking

Laser  
Consecutively numbered as standard  
Optional Customer name/logo  
Optional Laser Bar-coding

#### Colours

Transparent red or green cover with white body.  
Other colours may be available on request.