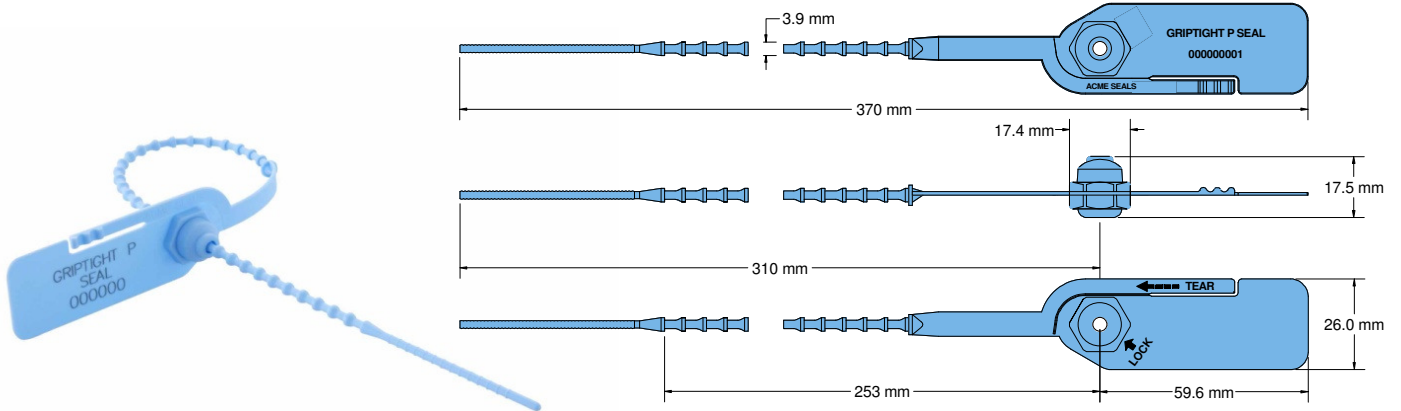




## GRIP TIGHT PP SEAL Data Sheet

Acme Reg. No. 0900180



The Acme **Griptight PP Seal** is a versatile pull-tight seal manufactured from two dissimilar materials. The acetyl insert is unique in design as it incorporates two sets of locking teeth moulded in one insert, unlike similar seals requiring two separate inserts. The material will withstand freezing and boiling conditions, whilst the polypropylene body is flexible for easy use. The design includes rolled heat staking technology to secure the insert to the body, which provides clear evidence of tampering if forced open or cut. There is also a tear off tag for easy removal, making this a very user friendly seal suitable for most applications.

### Technical Data

#### Recommended Applications

Airlines, Cargo, Trailers, Tankers, Rail Freight,  
Refineries, Containers, Postbags, Fire doors, Lockers.

#### Material

Body - Polypropylene  
Insert - Acetyl

#### Available Operating Length

31cm (overall 37cm)

#### Tag Marking Dimensions

26mm x 59.6mm

#### Ribbon Diameter

3.9mm

#### Average Breaking Strength

18kg

#### Marking

Laser, Foil or Thermo Transfer  
Consecutively numbered as standard  
Optional Customer name/logo  
Optional Laser or Thermo Transfer Barcoding

#### Colours

Foil: red, blue, green, yellow and orange, black, white.  
Laser: pastel shades of pink, blue, green, yellow and peach,  
also black and white.  
Thermo Transfer: all of the above  
Other colours may be available on request.

#### Packaging

Standard Packaging : 10 per mat and 1,000 seals/carton  
Carton Dimensions : 61cm x 40cm x 23.3cm  
Carton Weight : 5.92kg/carton