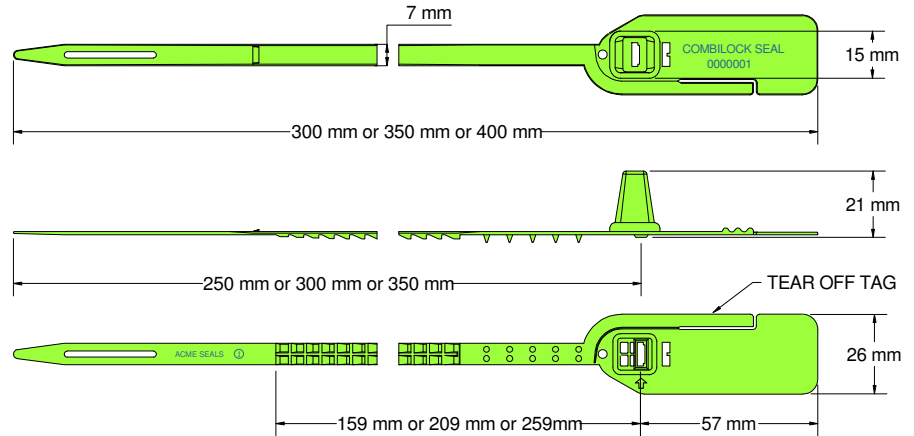




COMBILOCK SEAL Data Sheet

Acme Reg No. 0211160



The Acme **CombiLock Seal** is a versatile pull-tight seal manufactured from Polypropylene material. The design features a strong locking mechanism providing positive audible clicks and a tear off tag for easy removal, making this seal suitable for most applications.

Technical Data

Recommended Applications

Airlines, Cargo, Trailers, Containers, Rail freight, Refineries, Warehouses, Cash bags, Postbags, Lockers.

Material

Polypropylene

Available Operating Lengths

- (L1) 25cm (overall 30cm)
- (L2) 30cm (overall 35cm)
- (L3) 35cm (overall 40cm)

Strap Width

7mm

Tag Marking Dimensions

26mm x 48mm

Average Breaking Strength

20kg

Marking

- Laser, Foil or Thermo Transfer
- Consecutively numbered as standard
- Optional Customer name/logo
- Optional Laser or Thermo Transfer Barcoding

Colours

- Foil: red, blue, green, yellow and orange, black, white.
- Laser: pastel shades of pink, blue, green, yellow and peach, also black and white.
- Thermo Transfer: all of the above.
- Other colours may be available on request.

Packaging

- Standard Packaging : 10 per mat and 1,000 seals/carton
- Carton Dimensions : (L1) - 61cm x 36cm x 22cm
- : (L2) - 61cm x 40cm x 23cm
- : (L3) - 61cm x 44cm x 23cm
- Carton weight : (L1) - 5.69kg/carton
- : (L2) - 6.05kg/carton
- : (L3) - 6.95kg/carton