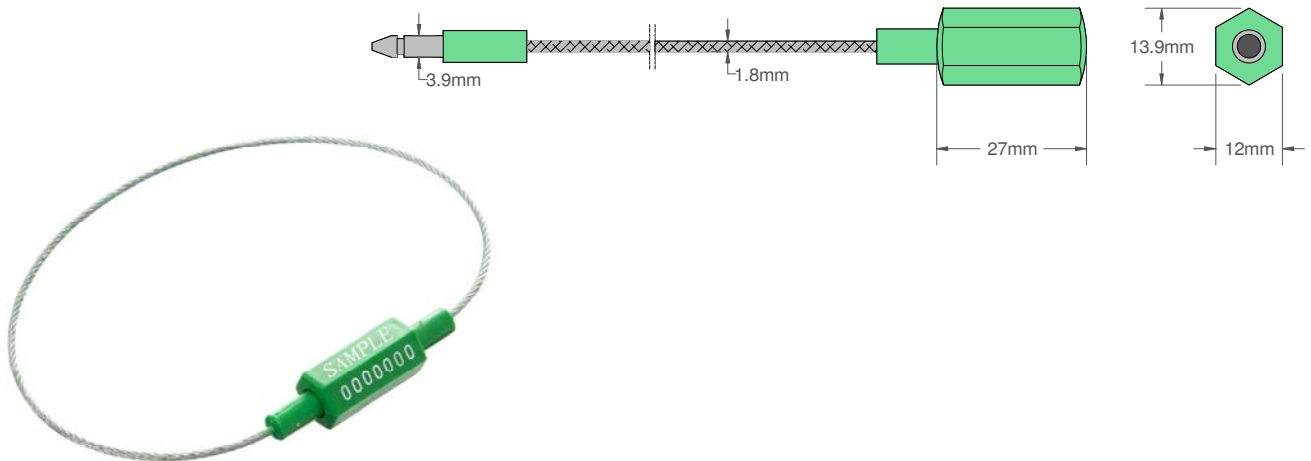




CS2 SEAL Data Sheet



The Acme **CS2 Seal** is a fixed length cable seal manufactured from high quality materials. The locking mechanism and attached cable is protected with high impact ABS plastic and the cable is manufactured from non-preformed galvanized steel, adjoined to a steel locking pin, also protected with high impact ABS. The seal requires cutters for removal.

Technical Data

Recommended Applications

Trailers, Containers, Rail freight, Refineries, Warehouses

Material

Body - High Impact ABS plastic
Cable - Non-Preformed Galvanised Steel

Available Cable Length (cm)

30cm – 400cm

Cable Diameter (mm)

1.8mm

Average Breaking Strength

240kg

Marking

Laser or Foil marking
Consecutively numbered as standard
Optional Customer name/logo

Colours

Red, blue, green, yellow, orange, black, white.
Other colours may be available on request.

Packaging

Standard Packaging (30cm wire length)
100 seals/bag and 10 bags/carton (1000 seals)
Carton Dimensions: 33.5cm x 30cm x 14.5cm
Carton Gross Weight: 17.5kg